

**Geography Teachers' Professional Experience Sharing
on Geography Education in Hong Kong (2023) –
Good Practices on the Learning & Teaching of Geography [Online course via Zoom]**

**Brief note of Learning and Teaching Strategies in Geography and Environmental
Education in Sing Yin Secondary School**

Presented by

Miss Lok Yuen Kwan

Panel Head of Geography Department

Chairperson of Environmental Education Committee

A. Learning of Geography

Strengths of students

- Most of them show interest in the nature and the environment surrounding them.
- They have the basic knowledge on Hong Kong geography through their past learning and their awareness on current affairs.

Weaknesses of students

- Some of them are examination-oriented. They like to be spoon-fed, recite materials given by teachers and lack creativity. They are weak in self-learning.
- Some of them show less motivation in learning in routine lessons.
- The participation rate of field trips / talks held on weekends / after school on a voluntary basis is rather low.

B. To promote the study of geography through active learning:

- Field trips, visits and various activities have been organized in all forms.
- Examples

1. Form One

Teaching Topic: Using Urban Space Wisely

- Fieldwork on land use around the school campus (collaborated with History Department)
- Visits to the Urban Renewal Exploration Centre and the Central Market

Teaching Topic: Food Problems

- Visit to an Organic Farm

2. Form two

Teaching Topic: The Trouble of Water

- Visits to the Happy Valley Underground Stormwater Storage Tank and the Sewage Treatment Works

Teaching Topic: Living with Natural Hazards

- Use of Sandbox
- Self-learning activity: Identification of slope management strategies on the slopes near the school campus

3. Form three

Teaching Topic: Changing Climate, Changing Environments

- Visit to the Jockey Club Museum of Climate Change

Teaching Topic: Global Shift of Manufacturing Industry

- Visits to Yakult/ Hong Kong Science Park

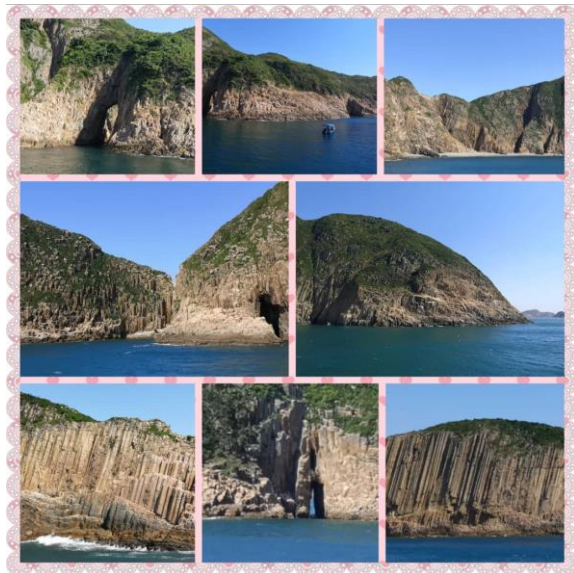
4. Form Four to Form Six

Teaching Topic: Opportunities and Risks

- Field trip to Ma Shi Chau

Teaching Topic: River and Coast

- Field trips to Luk Keng and Shek O
- Visits to the Happy Valley Underground Stormwater Storage Tank
- Boat trip at Sai Kung





Teaching Topics: Disappearing Green Canopy/ Farming/ Coast/ Dynamic Earth/
Opportunities and Risks/ Sustainable City/ Climate Change

- 2 days 1 night Field camp/ Half-day fieldwork at Caritas Chan Chun Ha Field Studies Centre

Teaching Topic: Urban Renewal/ Urban Decay

- Fieldwork on urban studies
Wan Chai - The Blue House Cluster / Lee Tung Avenue
Sham Shui Po - Castle Peak Road

5. Overseas Study Tours (4 days 3 nights)

Examples: Taiwan, Mainland China, Malaysia, Vietnam, Jeju Island



Mekong River, Vietnam



Jeju Island



Tama Negara National Park, Malaysia



Night Jungle walk, Night Safari, Malaysia

6. Taiwan Study Tour Introduction (26/6 – 29/6/2023)

Taiwan Study Tour (26/6 - 29/6/2023)

► 06 月 26 日

香港 → 台中(清泉崗) ~ 清境 ~ 小瑞士花園

► 06 月 27 日

清境農場(青青草原) **Livestock rearing, Terraced fields**

廣興紙寮(臺灣一家結合文化保存與觀光發展的造紙廠。廣興紙寮是家傳統造紙廠，經過轉型後，開放遊客觀光及動手體驗的紙工廠。) **Paper manufacturing plant**

921地震教育園區 (全館座落地震遺址之上，沿斷層而建，並將部分地震後留下的毀壞教室、斷層剖面完好如初地作為教材展示，教室進行結構性補強。)

Plate tectonics, Earthquake

台中高鐵站：乘坐高鐵列車前往台北

台北車站 ~ 抵達台北車站後，從台北車站經「地下街」步行前往台灣地標商圈「西門町商圈」

► 06 月 28 日

十分風景區(十分瀑布、車站、老街)：觀賞十分瀑布、遊覽車站，於老街放天燈，安排每 4 人放 1 盞天燈。十分風景區是臺灣風景區中是屬於瀑布溪谷型。 [Fluvial features](#)

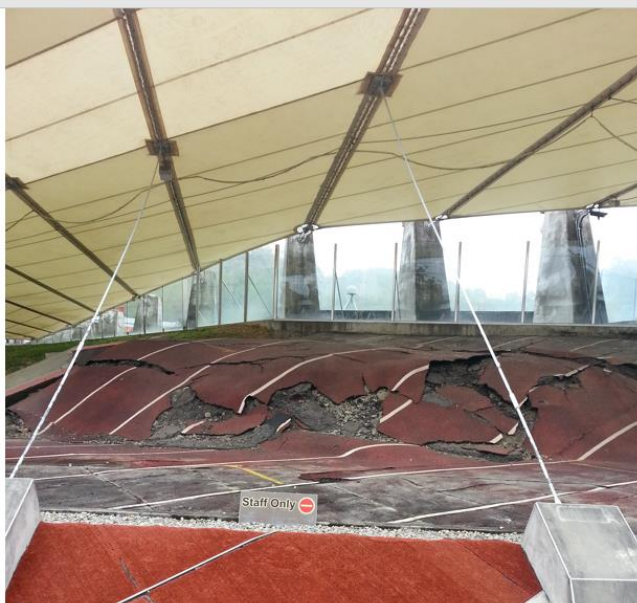
餐後，前往新北市遊覽「野柳地質公園」。「野柳」為大屯山餘脈伸出海中的岬角，從金山遠眺，猶如潛入海中的巨龜，故又名為「野柳龜」。 [Denudation: Features of Weathering and Erosion](#)

再往臺灣第一座商業運轉的風力發電機組，整體設置考量視覺比例與美感，力求與當地環境景觀協調融合的「石門風力發電站」遊覽。全區共有六座風車，風車紅白相間，不同於澎湖的純白造形，遠看相當醒目。 [Renewable Energy / Sustainable City / Combating Climate Change](#)

► 06 月 29 日

北投焚化廠：台灣加強環境保護而興建之垃圾焚化廠之一，以現代化之機械設備及最新之焚化技術，減少垃圾體積節省掩埋空間，達到垃圾減量化、安定化、無害化及資源化，並有效控制二次污染及回收能源。 [Sustainable City](#)

再往複合式文化展演園區，前身為台北酒廠的「華山 1914 文化創意產業園區」遊覽。 [Revitalization](#)

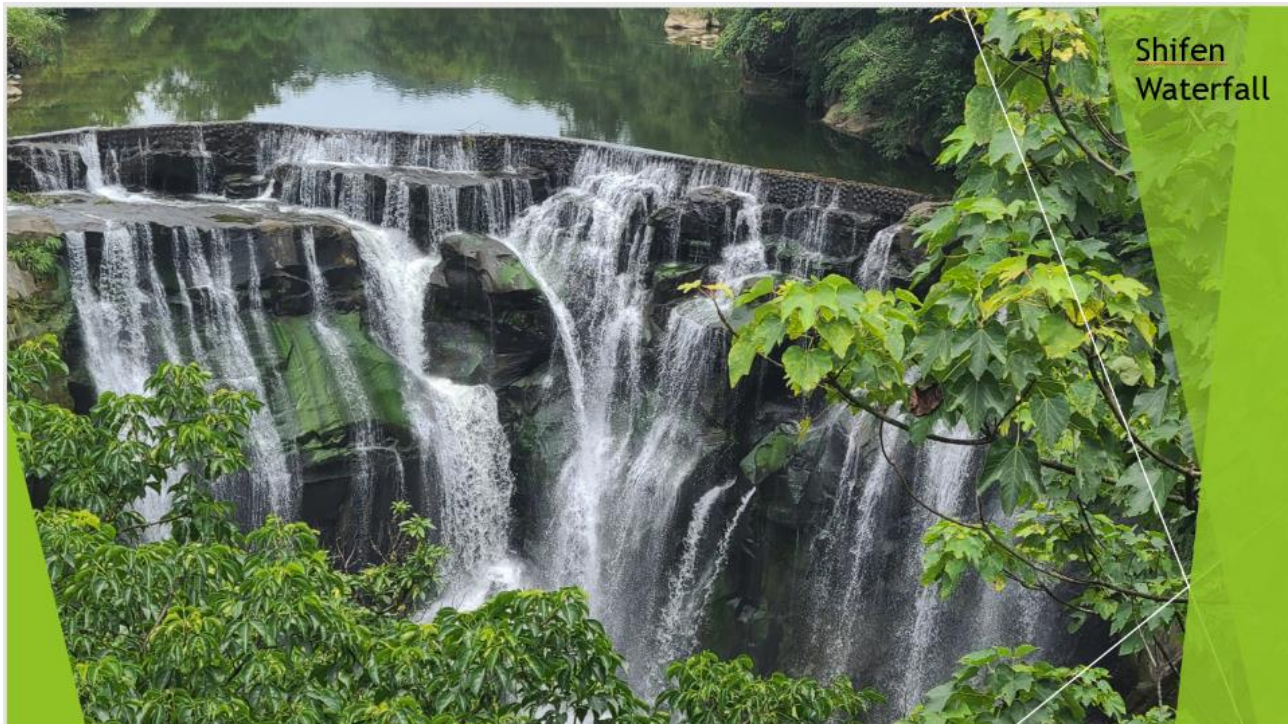


Plates involved, internal force, type of fault
Time of occurrence
Depth of focus
Duration of earthquake
Magnitude
Population density
Building structure



921 Earthquake Museum of Taiwan

1999 921 Jiji Earthquake



Shifen Waterfall



7. Geography and Environmental Education

Geography x Environmental Education in Sing Yin

Mitigating Climate Change



上網電價詳情:

可再生能源系統

電錶號碼	由	至	日數	發電容量 (千瓦)	度數	上網電價 每度電(\$)	金額(\$)
位置: 38 NEW CLEAR WATER BAY ROAD, KWUN TONG, KOWLOON 9110244(上網電價)	08-12-21	07-01-22	31	65.40	3403	-4.00	-13,612.00

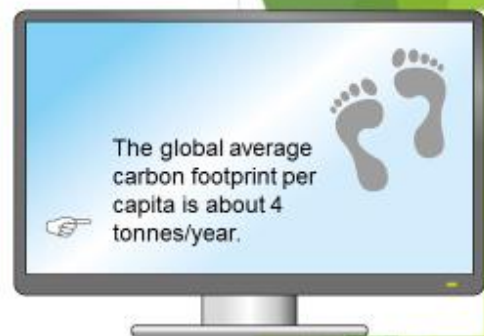
1. What are the advantages of using renewable energy resources?
2. How can this programme (Feed-in Tariff) help to achieve carbon neutrality in Hong Kong?
3. Is it a good way to mitigate climate change in Hong Kong?

Carbon Footprint

<https://www.climateready.gov.hk/>



Low Carbon Living Calculator



1. What is low-carbon lifestyle?
2. As an individual, what can we do to reduce carbon emissions in our daily lives?
3. Are there any difficulties in taking these actions?
4. Why is it important to mitigate climate change?

Environmental Prefects and Monitors

Main duties: to organize activities to promote environmental conservation and to implement our Energy Saving Policies in classrooms and to keep classrooms clean and tidy (classroom cleanliness campaign)

1. They are only allowed to turn on the air conditioners in classrooms when the heat index $\geq 25.5^{\circ}\text{C}$ or relative humidity $\geq 95\%$.
2. They switch off the lights, fans, LCD monitors in classrooms when they are not in use.

Sing Yin Weather Station

<http://www.singyin.edu.hk/zh/>



Environmental Ambassadors

- Junior form students
- 3 to 6 students from each class
- A total of about 70-80 environmental ambassadors

Teacher-and-student Low-carbon Cooking Competition



Organic Farming



Aquaponics



與基督教家庭服務中心合作的「減廢在校園」活動 (9/2018 - 3/2019)



Municipal Solid Waste Charging



環保基金·減廢在校園

垃圾審核分析

- 使用政府提供的**專用垃圾袋**棄置垃圾
- 本會職員與環保大使會就垃圾進行**重量紀錄統計**
- **觀察每月垃圾量及回收量變化**，並比對在計劃前的垃圾量
- **每月製作模擬賬單**，讓校方得悉日後落實措施後的收費



9款指定垃圾袋

資料來源：環保署

3公升	5公升	10公升	15公升	20公升	35公升	50公升	75公升	100公升
\$0.3	\$0.6	\$1.1	\$1.7	\$2.2	\$3.9	\$5.5	\$8.5	\$11



Inter-school Green Fashion Show organized by Sing Yin Secondary School: to promote low-carbon lifestyle and to raise awareness on sustainable industrial development.